

MLS Statistics

Monthly 2022 to 2021 Comparison

Elkhart County Residential

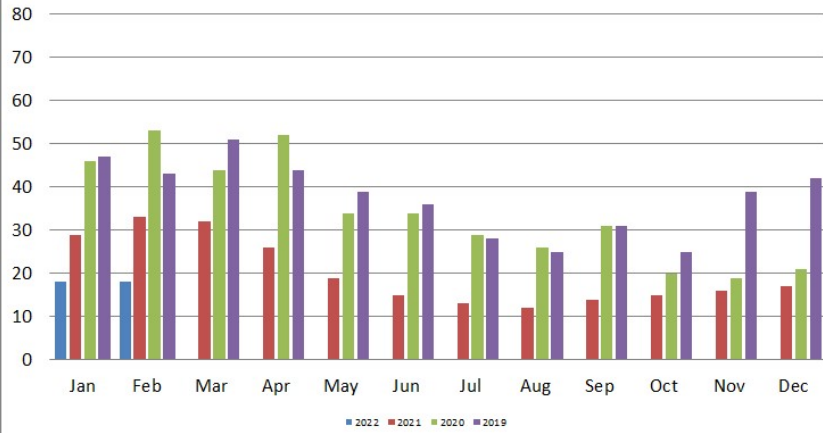
This comparison is based on properties from the MLS of Elkhart County representing Elkhart County Townships

Month	# New Listings			# Active Listings			# Sold Listing			Median Price \$			DOM			% Sale to List		
	2022 Monthly	2021 Monthly	2021 Annual	2022 Monthly	2021 Monthly	2021 Annual	2022 Monthly	2021 Monthly	2021 Annual	2022 Monthly	2021 Monthly	2021 Annual	2022 Monthly	2021 Monthly	2021 Annual	2022 Monthly	2021 Monthly	2021 Annual
JANUARY	137	127	127	119	153	153	144	131	131	195,000	175,000	175,000	18	29	29	100.48	98.32	98.32
FEBRUARY	132	125	125	72	124	124	128	140	140	210,000	172,900	172,900	18	33	33	100.53	98.41	98.41
MARCH			206			121			151			182,500			32			97.78
APRIL			211			113			183			185,000			26			100.25
MAY			217			123			211			191,000			19			101.08
JUNE			269			144			198			205,250			15			101.86
JULY			276			152			212			215,000			13			101.08
AUGUST			238			195			266			209,700			12			100.31
SEPTEMBER			242			183			219			225,000			14			100.35
OCTOBER			228			162			226			219,700			15			100.22
NOVEMBER			181			164			218			200,000			16			100.59
DECEMBER			115			140			198			220,000			17			100.28
CUMMULATIVE TOTALS	269	252	2435				272	271	2353	200,000	175,000	205,000	18	31	19	100.51	98.37	100.23

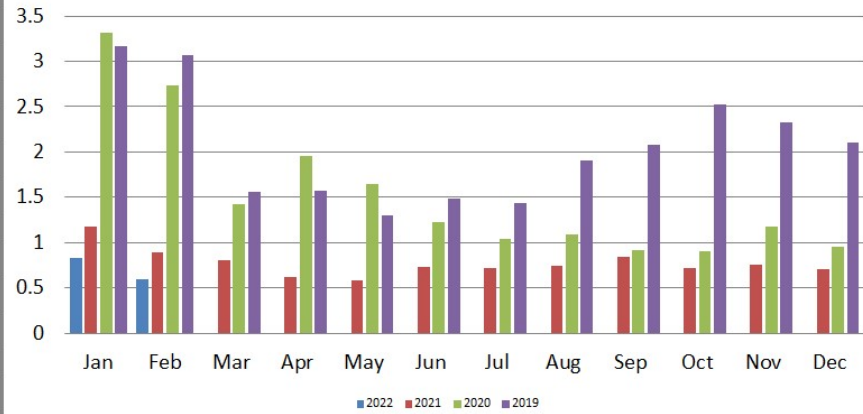
Statistics in this report were obtained from the Indiana Regional MLS & the U.S. Department of Labor Statistics. The Indiana Regional MLS and ECBOR are not responsible for the accuracy of the data. Data maintained by IRMLS/ECBOR may not reflect all real estate activity in Elkhart County. **Data revised quarterly to reflect activity reported after the date of this report.**

Report compiled as of 3/21/2022. Statistics are also available on the 16 Year History Report on the MLS Homepage.

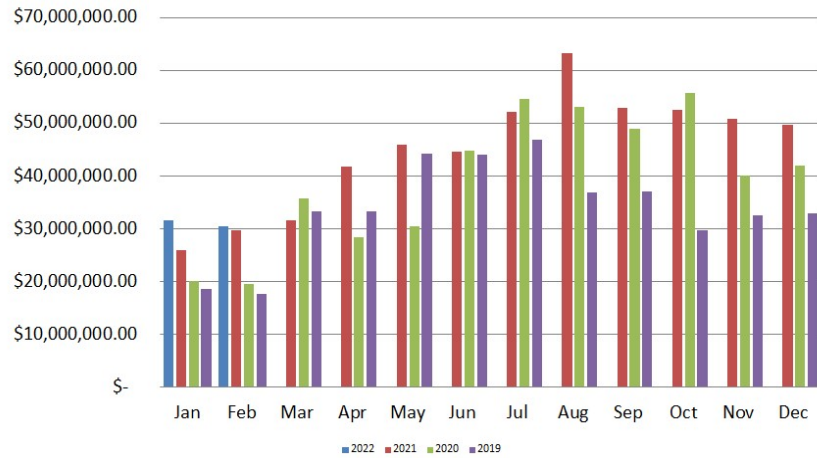
**Average Residential Days on Market
2022 - 2019**



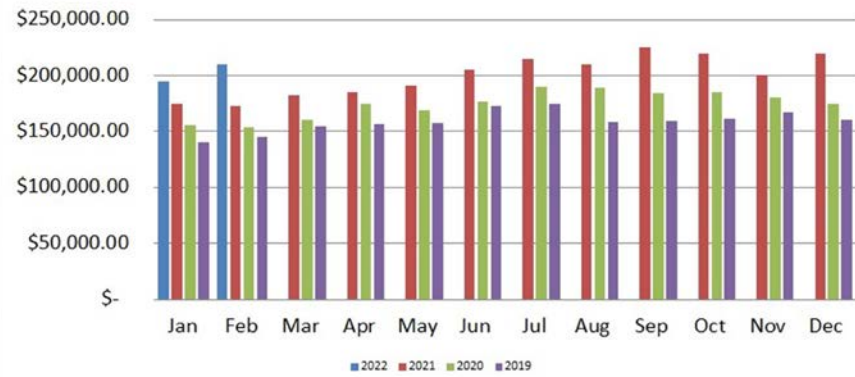
**Residential Absorption Rate
2022-2019**



**Residential Closed Sales Dollar Volume
2022 - 2019**



**Residential Median Sales Price
2022 - 2019**



The Median Sales Price for Residential properties is calculated by arranging the sale prices from lowest to highest and picking the middle sale price.

**Elkhart County Board of Realtors
Unemployment Statistics
Elkhart County
2022-2021-2020-2019-2018-2017-2016-2015-2014-2013-2012**

LOCAL

STATE

NATIONAL

Month	2022	2021	2020	2019	2018	2017	2016	2015	2014	2013	2012	2022	2021	2020	2019	2018	2017	2016	2015	2014	2013	2012	2022	2021	2020	2019	2018	2017	2016	2015	2014	2013	2012
January	1.6	3.5	3.0	3.7	2.4	3.4	3.9	5.0	5.8	9.5	11.2	2.4	4.7	3.5	4.1	3.6	4.5	5.0	6.1	6.6	9.0	9.1	4.4	6.8	4.0	4.4	4.5	5.1	5.3	6.1	7.0	8.5	8.8
February	NA	3.5	2.7	3.4	2.5	3.0	4.2	4.3	5.9	8.8	10.3	NA	4.7	3.4	4.1	3.8	4.3	5.1	5.6	6.9	8.6	9.0	4.1	6.6	3.8	4.1	4.4	4.9	5.2	5.8	7.0	8.1	8.7
March		3.5	2.7	3.1	2.2	2.6	3.9	4.0	5.7	8.3	10.1		4.6	3.7	3.9	3.3	3.7	5.1	5.2	6.6	8.2	8.7		6.2	4.5	3.9	4.1	4.6	5.1	5.6	6.8	7.6	8.4
April		3.0	30.8	2.5	2.1	2.1	3.5	3.4	4.8	7.4	9.2		4.2	16.5	3.1	3.1	3.0	4.5	4.5	5.5	7.4	7.9		5.7	14.4	3.3	3.7	4.1	4.7	5.1	5.9	7.1	7.7
May		3.2	11.4	2.7	2.4	2.4	3.3	3.9	5.1	7.4	9.1		4.5	11.9	2.9	3.2	3.2	4.2	4.9	5.9	7.6	8.1		5.5	13.0	3.4	3.6	4.1	4.5	5.3	6.1	7.3	7.9
June		3.4	9.5	3.1	2.8	2.6	3.7	3.9	5.1	7.7	9.3		4.7	10.3	3.3	3.7	3.5	4.6	4.8	6.0	7.9	8.5		6.1	11.2	3.8	4.2	4.5	5.1	5.5	6.3	7.8	8.4
July		2.9	8.7	3.8	2.7	2.6	3.6	3.8	5.3	7.5	9.5		4.2	8.9	3.6	3.6	3.6	4.4	4.7	6.1	7.5	8.5		5.7	10.5	4.0	4.1	4.6	5.1	5.6	6.5	7.7	8.6
August		2.8	6.4	3.2	2.9	2.9	3.6	3.6	5.1	7.2	9.3		4.0	7.2	3.2	3.6	3.9	4.4	4.5	5.9	7.2	8.4		5.3	8.5	3.8	3.9	4.5	5.0	5.2	6.3	7.3	8.2
September		2.4	5.2	2.7	2.5	2.3	3.3	3.4	4.7	6.9	8.9		3.5	6.0	2.8	3.1	3.3	4.0	4.1	5.3	6.9	7.9		4.6	7.7	3.3	3.6	4.1	4.8	4.9	5.7	7.0	7.6
October		1.8	4.3	2.9	2.7	2.2	3.2	3.5	4.8	6.9	8.9		2.5	5.1	3.0	3.3	3.1	3.9	4.3	5.4	6.9	7.9		4.3	6.6	3.3	3.5	3.9	4.7	4.8	5.5	7.0	7.5
November		1.5	4.2	2.9	2.7	2.4	3.1	3.7	5.1	6.8	9.2		2.1	4.8	3.2	3.3	3.2	3.9	4.5	5.7	6.7	8.1		3.9	6.4	3.3	3.5	3.9	4.4	4.8	5.5	6.6	7.4
December		.09	3.5	2.7	2.9	2.1	3.0	3.6	4.9	6.4	9.5		1.3	4.4	3.0	3.4	3.1	4.0	4.6	5.5	6.3	8.5		3.7	6.5	3.4	3.7	3.9	4.5	4.8	5.4	6.5	7.6

Statistics in this report were obtained from the Indiana Regional MLS & the U.S. Department of Labor Statistics. The Indiana Regional MLS and ECBOR are not responsible for the accuracy of the data. Data maintained by IRMLS/ECBOR may not reflect all real estate activity in Elkhart County. **Data revised quarterly to reflect activity reported after the date of this report.**
Report compiled as of 3/21/2022.