

MLS Statistics

Monthly 2022 to 2021 Comparison

Elkhart County Residential

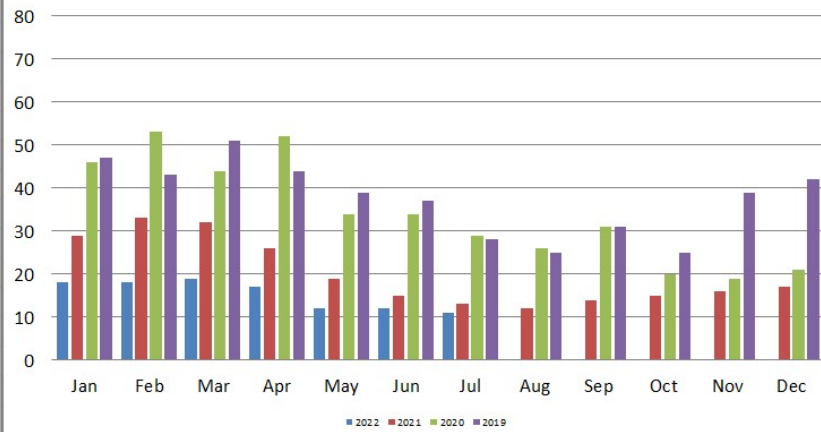
This comparison is based on properties from the MLS of Elkhart County representing Elkhart County Townships

Month	# New Listings			# Active Listings			# Sold Listing			Median Price \$			DOM			% Sale to List		
	2022 Monthly	2021 Monthly	2021 Annual	2022 Monthly	2021 Monthly	2021 Annual	2022 Monthly	2021 Monthly	2021 Annual	2022 Monthly	2021 Monthly	2021 Annual	2022 Monthly	2021 Monthly	2021 Annual	2022 Monthly	2021 Monthly	2021 Annual
JANUARY	137	127	127	119	153	153	145	131	131	195,000	175,000	175,000	18	29	29	100.48	98.32	98.32
FEBRUARY	132	125	125	76	124	124	130	140	140	210,000	172,900	172,900	18	33	33	100.53	98.41	98.41
MARCH	222	206	206	89	121	121	146	151	151	201,500	182,500	182,500	19	32	32	101.18	97.78	97.78
APRIL	233	211	211	125	113	113	169	183	183	224,900	185,000	185,000	17	26	26	102.46	100.25	100.25
MAY	233	217	217	128	123	123	194	211	211	207,500	191,000	191,000	12	19	19	102.92	101.08	101.08
JUNE	278	269	269	176	144	144	216	198	198	235,750	205,250	205,250	12	15	15	101.82	101.86	101.86
JULY	258	276	276	208	152	152	221	212	212	238,500	215,000	215,000	11	13	13	101.87	101.08	101.08
AUGUST			238	235	195	195			266			209,700			12			100.31
SEPTEMBER			242			183			219			225,000			14			100.35
OCTOBER			228			162			226			219,700			15			100.22
NOVEMBER			181			164			218			200,000			16			100.59
DECEMBER			115			140			198			220,000			17			100.28
CUMMULATIVE TOTALS	1493	1431	2435				1221	1226	2353	220,000	193,000	205,000	15	23	19	101.73	100.12	100.23

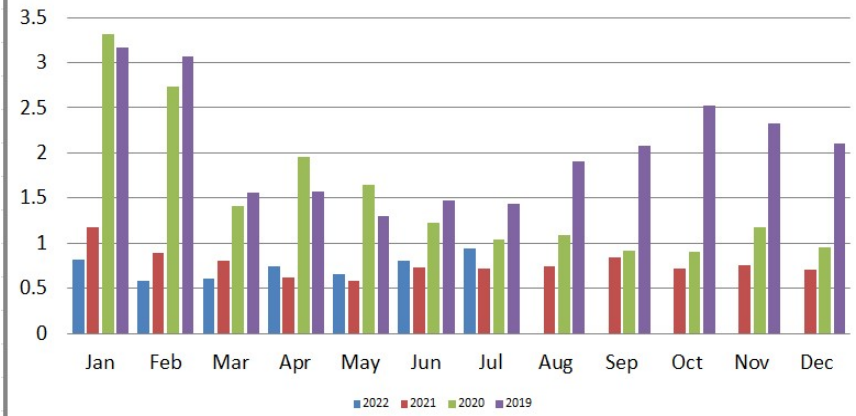
Statistics in this report were obtained from the Indiana Regional MLS & the U.S. Department of Labor Statistics. The Indiana Regional MLS and ECBOR are not responsible for the accuracy of the data. Data maintained by IRMLS/ECBOR may not reflect all real estate activity in Elkhart County. **Data revised quarterly to reflect activity reported after the date of this report.**

Report compiled as of 8/15/2022. Statistics are also available on the 16 Year History Report on the MLS Homepage.

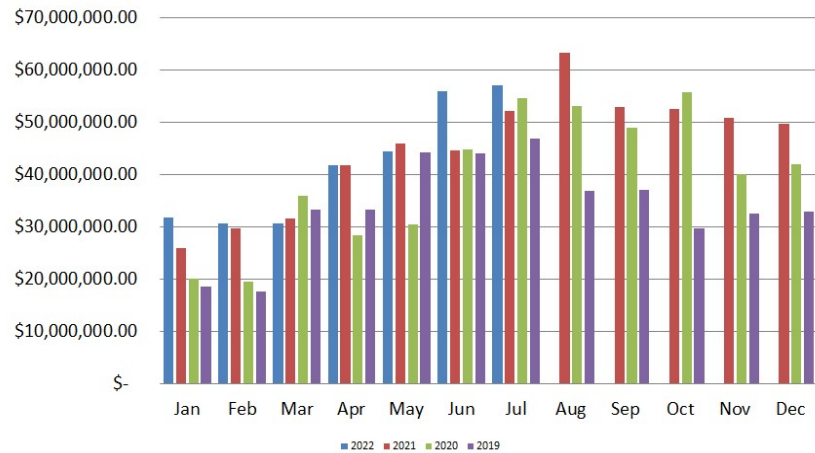
**Average Residential Days on Market
2022 - 2019**



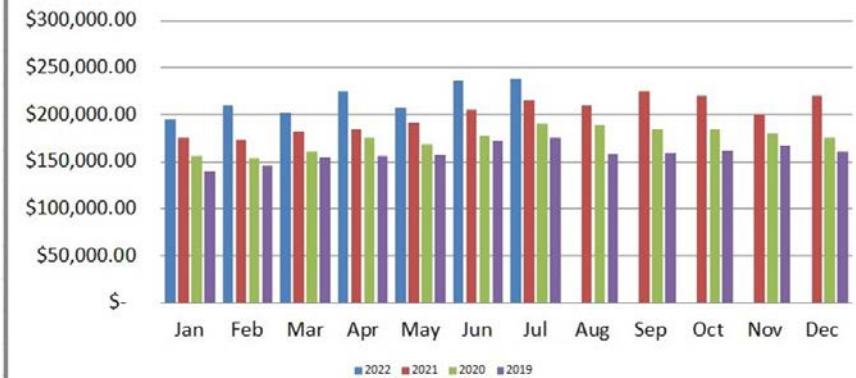
**Residential Absorption Rate
2022-2019**



**Residential Closed Sales Dollar Volume
2022 - 2019**



**Residential Median Sales Price
2022 - 2019**



The Median Sales Price for Residential properties is calculated by arranging the sale prices from lowest to highest and picking the middle sale price.

**Elkhart County Board of Realtors
Unemployment Statistics
Elkhart County
2022-2021-2020-2019-2018-2017-2016-2015-2014-2013-2012**

Month	LOCAL											STATE											NATIONAL										
	2022	2021	2020	2019	2018	2017	2016	2015	2014	2013	2012	2022	2021	2020	2019	2018	2017	2016	2015	2014	2013	2012	2022	2021	2020	2019	2018	2017	2016	2015	2014	2013	2012
January	1.6	3.8	3.0	3.7	2.4	3.4	3.9	5.0	5.8	9.5	11.2	2.4	5.0	3.5	4.1	3.6	4.5	5.0	6.1	6.6	9.0	9.1	4.4	6.8	4.0	4.4	4.5	5.1	5.3	6.1	7.0	8.5	8.8
February	1.7	3.4	2.7	3.4	2.5	3.0	4.2	4.3	5.9	8.8	10.3	2.7	4.7	3.4	4.1	3.8	4.3	5.1	5.6	6.9	8.6	9.0	4.1	6.6	3.8	4.1	4.4	4.9	5.2	5.8	7.0	8.1	8.7
March	1.8	3.3	2.7	3.1	2.2	2.6	3.9	4.0	5.7	8.3	10.1	2.7	4.6	3.7	3.9	3.3	3.7	5.1	5.2	6.6	8.2	8.7	3.8	6.2	4.5	3.9	4.1	4.6	5.1	5.6	6.8	7.6	8.4
April	1.4	2.7	30.8	2.5	2.1	2.1	3.5	3.4	4.8	7.4	9.2	2.2	3.9	16.5	3.1	3.1	3.0	4.5	4.5	5.5	7.4	7.9	3.3	5.7	14.4	3.3	3.7	4.1	4.7	5.1	5.9	7.1	7.7
May	1.8	2.8	11.4	2.7	2.4	2.4	3.3	3.9	5.1	7.4	9.1	2.5	4.0	11.9	2.9	3.2	3.2	4.2	4.9	5.9	7.6	8.1	3.4	5.5	13.0	3.4	3.6	4.1	4.5	5.3	6.1	7.3	7.9
June	2.3	3.1	9.5	3.1	2.8	2.6	3.7	3.9	5.1	7.7	9.3	3.2	4.4	10.3	3.3	3.7	3.5	4.6	4.8	6.0	7.9	8.5	3.8	6.1	11.2	3.8	4.2	4.5	5.1	5.5	6.3	7.8	8.4
July	NA	2.5	8.7	3.8	2.7	2.6	3.6	3.8	5.3	7.5	9.5	NA	3.7	8.9	3.6	3.6	3.6	4.4	4.7	6.1	7.5	8.5	3.8	5.7	10.5	4.0	4.1	4.6	5.1	5.6	6.5	7.7	8.6
August		2.2	6.4	3.2	2.9	2.9	3.6	3.6	5.1	7.2	9.3		3.3	7.2	3.2	3.6	3.9	4.4	4.5	5.9	7.2	8.4		5.3	8.5	3.8	3.9	4.5	5.0	5.2	6.3	7.3	8.2
September		2.0	5.2	2.7	2.5	2.3	3.3	3.4	4.7	6.9	8.9		2.9	6.0	2.8	3.1	3.3	4.0	4.1	5.3	6.9	7.9		4.6	7.7	3.3	3.6	4.1	4.8	4.9	5.7	7.0	7.6
October		1.8	4.3	2.9	2.7	2.2	3.2	3.5	4.8	6.9	8.9		2.5	5.1	3.0	3.3	3.1	3.9	4.3	5.4	6.9	7.9		4.3	6.6	3.3	3.5	3.9	4.7	4.8	5.5	7.0	7.5
November		1.5	4.2	2.9	2.7	2.4	3.1	3.7	5.1	6.8	9.2		2.2	4.8	3.2	3.3	3.2	3.9	4.5	5.7	6.7	8.1		3.9	6.4	3.3	3.5	3.9	4.4	4.8	5.5	6.6	7.4
December		1.0	3.5	2.7	2.9	2.1	3.0	3.6	4.9	6.4	9.5		1.5	4.4	3.0	3.4	3.1	4.0	4.6	5.5	6.3	8.5		3.7	6.5	3.4	3.7	3.9	4.5	4.8	5.4	6.5	7.6

Statistics in this report were obtained from the Indiana Regional MLS & the U.S. Department of Labor Statistics. The Indiana Regional MLS and ECBOR are not responsible for the accuracy of the data. Data maintained by IRMLS/ECBOR may not reflect all real estate activity in Elkhart County. **Data revised quarterly to reflect activity reported after the date of this report.**
Report compiled as of 8/15/2022.