

# MLS Statistics

## Monthly 2022 to 2021 Comparison

### Elkhart County Residential

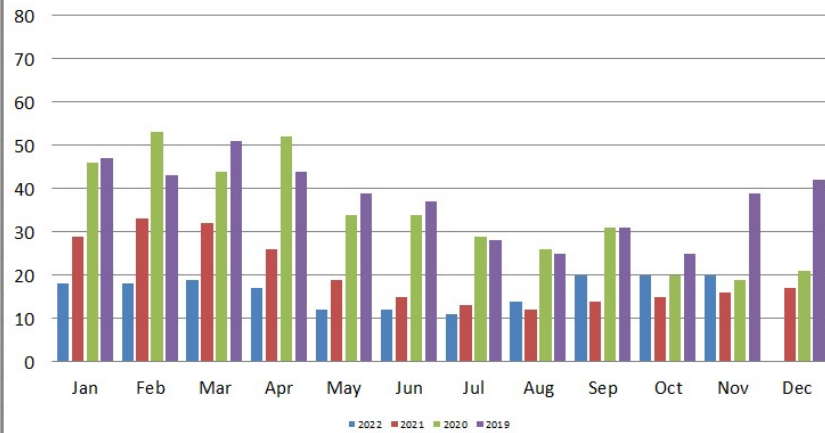
This comparison is based on properties from the MLS of Elkhart County representing Elkhart County Townships

Month	# New Listings			# Active Listings			# Sold Listing			Median Price \$			DOM			% Sale to List		
	2022 Monthly	2021 Monthly	2021 Annual	2022 Monthly	2021 Monthly	2021 Annual	2022 Monthly	2021 Monthly	2021 Annual	2022 Monthly	2021 Monthly	2021 Annual	2022 Monthly	2021 Monthly	2021 Annual	2022 Monthly	2021 Monthly	2021 Annual
JANUARY	137	127	127	119	153	153	145	131	131	195,000	175,000	175,000	18	29	29	100.48	98.32	98.32
FEBRUARY	132	125	125	76	124	124	130	140	140	210,000	172,900	172,900	18	33	33	100.53	98.41	98.41
MARCH	222	206	206	89	121	121	147	151	151	203,000	182,500	182,500	19	32	32	101.17	97.78	97.78
APRIL	233	211	211	125	113	113	169	183	183	224,900	185,000	185,000	17	26	26	102.46	100.25	100.25
MAY	233	217	217	128	123	123	194	211	211	207,500	191,000	191,000	12	19	19	102.92	101.08	101.08
JUNE	278	269	269	176	144	144	218	198	198	235,250	205,250	205,250	12	15	15	101.85	101.86	101.86
JULY	258	276	276	208	152	152	224	212	212	239,250	215,000	215,000	11	13	13	101.86	101.08	101.08
AUGUST	239	239	238	235	195	195	213	266	266	220,000	209,700	209,700	14	12	12	99.54	100.31	100.31
SEPTEMBER	208	242	242	233	183	183	215	219	219	219,900	225,000	225,000	20	14	14	98.38	100.35	100.35
OCTOBER	198	228	228	238	162	162	177	226	226	210,000	219,700	219,700	20	14	15	97.93	100.22	100.22
NOVEMBER	169	181	181	259	164	164	154	218	218	227,450	200,000	200,000	20	16	16	98.28	100.59	100.59
DECEMBER			115	220	140	140			198			220,000			17			100.28
<b>CUMMULATIVE TOTALS</b>	<b>2307</b>	<b>2320</b>	<b>2435</b>				<b>1986</b>	<b>2155</b>	<b>2353</b>	<b>220,900</b>	<b>201,000</b>	<b>205,000</b>	<b>16</b>	<b>19</b>	<b>19</b>	<b>100.49</b>	<b>100.23</b>	<b>100.23</b>

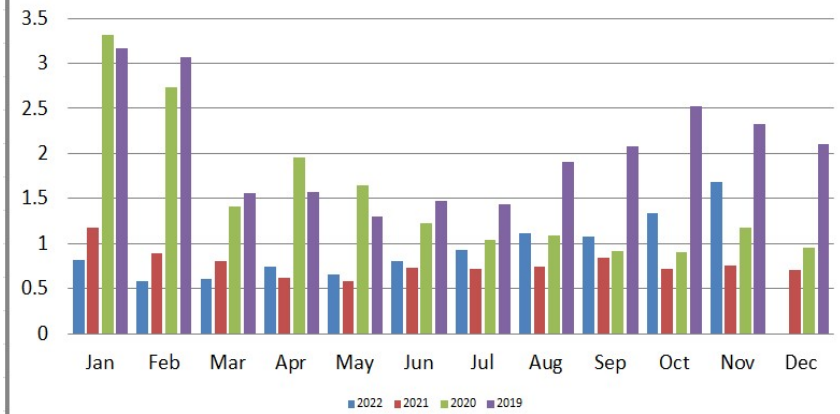
Statistics in this report were obtained from the Indiana Regional MLS & the U.S. Department of Labor Statistics. The Indiana Regional MLS and ECBOR are not responsible for the accuracy of the data. Data maintained by IRMLS/ECBOR may not reflect all real estate activity in Elkhart County. **Data revised quarterly to reflect activity reported after the date of this report.**

**Report compiled as of 12/07/2022. Statistics are also available on the 16 Year History Report on the MLS Homepage.**

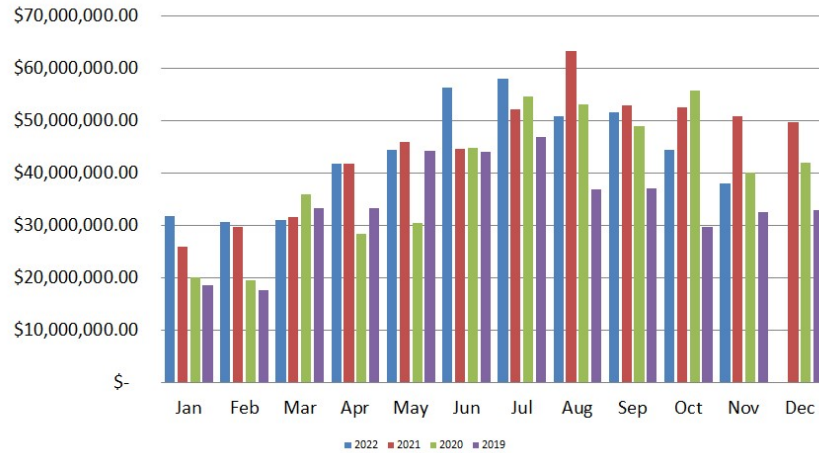
### Average Residential Days on Market 2022 - 2019



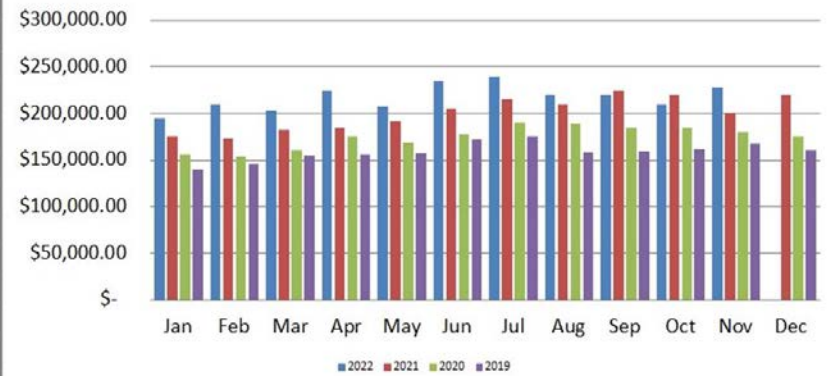
### Residential Absorption Rate 2022-2019



### Residential Closed Sales Dollar Volume 2022 - 2019



### Residential Median Sales Price 2022 - 2019



The Median Sales Price for Residential properties is calculated by arranging the sale prices from lowest to highest and picking the middle sale price.

**Elkhart County Board of Realtors  
Unemployment Statistics  
Elkhart County  
2022-2021-2020-2019-2018-2017-2016-2015-2014-2013-2012**

Month	LOCAL											STATE											NATIONAL										
	2022	2021	2020	2019	2018	2017	2016	2015	2014	2013	2012	2022	2021	2020	2019	2018	2017	2016	2015	2014	2013	2012	2022	2021	2020	2019	2018	2017	2016	2015	2014	2013	2012
January	1.6	3.8	3.0	3.7	2.4	3.4	3.9	5.0	5.8	9.5	11.2	2.4	5.0	3.5	4.1	3.6	4.5	5.0	6.1	6.6	9.0	9.1	4.4	6.8	4.0	4.4	4.5	5.1	5.3	6.1	7.0	8.5	8.8
February	1.7	3.4	2.7	3.4	2.5	3.0	4.2	4.3	5.9	8.8	10.3	2.7	4.7	3.4	4.1	3.8	4.3	5.1	5.6	6.9	8.6	9.0	4.1	6.6	3.8	4.1	4.4	4.9	5.2	5.8	7.0	8.1	8.7
March	1.8	3.3	2.7	3.1	2.2	2.6	3.9	4.0	5.7	8.3	10.1	2.7	4.6	3.7	3.9	3.3	3.7	5.1	5.2	6.6	8.2	8.7	3.8	6.2	4.5	3.9	4.1	4.6	5.1	5.6	6.8	7.6	8.4
April	1.4	2.7	30.8	2.5	2.1	2.1	3.5	3.4	4.8	7.4	9.2	2.2	3.9	16.5	3.1	3.1	3.0	4.5	4.5	5.5	7.4	7.9	3.3	5.7	14.4	3.3	3.7	4.1	4.7	5.1	5.9	7.1	7.7
May	1.8	2.8	11.4	2.7	2.4	2.4	3.3	3.9	5.1	7.4	9.1	2.5	4.0	11.9	2.9	3.2	3.2	4.2	4.9	5.9	7.6	8.1	3.4	5.5	13.0	3.4	3.6	4.1	4.5	5.3	6.1	7.3	7.9
June	2.4	3.1	9.5	3.1	2.8	2.6	3.7	3.9	5.1	7.7	9.3	3.2	4.4	10.3	3.3	3.7	3.5	4.6	4.8	6.0	7.9	8.5	3.8	6.1	11.2	3.8	4.2	4.5	5.1	5.5	6.3	7.8	8.4
July	2.7	2.5	8.7	3.8	2.7	2.6	3.6	3.8	5.3	7.5	9.5	3.5	3.7	8.9	3.6	3.6	3.6	4.4	4.7	6.1	7.5	8.5	3.8	5.7	10.5	4.0	4.1	4.6	5.1	5.6	6.5	7.7	8.6
August	2.5	2.2	6.4	3.2	2.9	2.9	3.6	3.6	5.1	7.2	9.3	3.1	3.3	7.2	3.2	3.6	3.9	4.4	4.5	5.9	7.2	8.4	3.8	5.3	8.5	3.8	3.9	4.5	5.0	5.2	6.3	7.3	8.2
September	2.0	2.0	5.2	2.7	2.5	2.3	3.3	3.4	4.7	6.9	8.9	2.2	2.9	6.0	2.8	3.1	3.3	4.0	4.1	5.3	6.9	7.9	3.3	4.6	7.7	3.3	3.6	4.1	4.8	4.9	5.7	7.0	7.6
October	2.6	1.8	4.3	2.9	2.7	2.2	3.2	3.5	4.8	6.9	8.9	2.8	2.5	5.1	3.0	3.3	3.1	3.9	4.3	5.4	6.9	7.9	3.4	4.3	6.6	3.3	3.5	3.9	4.7	4.8	5.5	7.0	7.5
November	NA	1.5	4.2	2.9	2.7	2.4	3.1	3.7	5.1	6.8	9.2	NA	2.2	4.8	3.2	3.3	3.2	3.9	4.5	5.7	6.7	8.1	3.4	3.9	6.4	3.3	3.5	3.9	4.4	4.8	5.5	6.6	7.4
December		1.0	3.5	2.7	2.9	2.1	3.0	3.6	4.9	6.4	9.5		1.5	4.4	3.0	3.4	3.1	4.0	4.6	5.5	6.3	8.5		3.7	6.5	3.4	3.7	3.9	4.5	4.8	5.4	6.5	7.6

Statistics in this report were obtained from the Indiana Regional MLS & the U.S. Department of Labor Statistics. The Indiana Regional MLS and ECBOR are not responsible for the accuracy of the data. Data maintained by IRMLS/ECBOR may not reflect all real estate activity in Elkhart County. **Data revised quarterly to reflect activity reported after the date of this report.**  
**Report compiled as of 12/07/2022.**